

Bluefish444 Windows User Manual for

Epoch | Horizon
Epoch | Core
Epoch | Ultra
Epoch | 2K Horizon
Epoch | 2K Core
Epoch | 2K Ultra

Tuesday, March 31, 2015

Warranty

Bluefish444 warrants that this product will be free from defects in materials and workmanship for a period of two (3) years from the date of purchase. This warranty is provided only to customers who register the Bluefish444 serial number at the place nominated on the Bluefish444 homepage. If a product proves to be defective during the warranty period, Bluefish444, at its option, will either repair the defective product without charge for parts and labour, or will provide a replacement in exchange for the defective product.

In order to obtain service under this warranty, the customer must notify Bluefish444 of the defect before the expiration of the warranty period. The customer shall be responsible for packing and shipping the defective product to a designated service centre nominated by Bluefish444 with shipping charges prepaid. The customer will be responsible for shipping charges and duties payable on return of the repaired or replaced product to the customer's address. The customer must provide Bluefish444 with details of its nominated international courier company.

This warranty shall not apply to any defect, failure or damage caused by improper use or improper or inadequate maintenance and care. Bluefish444 shall not be obligated to furnish service under this warranty a) to repair damage resulting from attempts by personnel other than Bluefish444 authorised resellers to install, repair or service the product, b) to repair damage resulting from improper use or connection to incompatible equipment, c) to repair any damage resulting or malfunction caused by the use of non Bluefish444 parts or supplies, d) to service a product that has been modified or integrated with other products when the effect of such a modification or integration increases the time or difficulty of servicing the product, or e) to repair or service a product that has been integrated and shipped as part of a workstation which may increase the risk of damage caused to the Bluefish444 card within the workstation during transit.

This warranty specifically shall not apply to Bluefish444 products purchased second hand.

This warranty is given by Bluefish444 in lieu of any other warranties, expressed or implied. Bluefish444's responsibility to repair or replace defective products is the whole and exclusive remedy provided to the customer for any indirect, special, incidental or consequential damages.

Introduction

Every so often, the application of advanced technology, modern industrial design and manufacturing processes yields a break-through that delivers real advantages over its predecessors. Introducing Bluefish444's Epoch range of uncompressed 2K/HD/SD SDI capture cards.

Broadcast Engineering Redefined

Let's face it, "broadcast quality" 10 years ago is much like comparing VHS is to Blu-ray today! Everyone's quick to spruik their product as being "broadcast quality" but with the advent of 3G-SDI, 12bit video processing and Stereoscopic 3D capability, Bluefish444's new Epoch truly delivers what others just talk about. The quality & flexibility of our scalers is unsurpassed!

Epoch's 4 lane PCI-e cards have a maximum bandwidth of 1.1GB/s delivering full duplex DMA. Add to that the precision of our hardware based Color Space Conversion, 2K video resolution and our proprietary RapidFlow+MR2 technology, it's no wonder we're the Professionals' Choice!

Extreme Reliability

1000's of customers attest to using our products in "mission critical" environments such as digital intermediary post and live broadcast where they're running 24/7. Our engineering, know-how and products are backed by a three year warranty.

Flexibility of our hardware

From MR2's routing architecture, to RapidFlow's agnostic scaling and cross conversion options, our hardware upgrade path and the power to choose is yours for the taking. It's a whole new ball game. A new Epoch if you will.



Epoch Product Matrix

	Epoch Horizon	Epoch Core	Epoch Ultra	Epoch 2K Horizon	Epoch 2K Core	Epoch 2K Ultra
Streams Video	*1	*1	*1	*2	*2	*2
SDI Inputs	1	1	1	2	2	2
SDI Outputs	2	2	2	2	2	2
4:4:4:4 Input	No	No	No	Yes	Yes	Yes
4:4:4:4 Output	No	No	No	Yes	Yes	Yes
4:2:2:4 Input	No	No	No	Yes	Yes	Yes
4:2:2:4 Output	Yes	Yes	Yes	Yes	Yes	Yes
Hardware Scalers	NIL	1 X Jetstream	1 X Jetstream	NIL	2 X Jetstream	2 X Jetstream
DVI/HDMI Preview	NIL	NIL	1 X VariVue	NIL	NIL	1 X VariVue
Windows & Linux SDK	Yes	Yes	Yes	Yes	Yes	Yes

*Full Duplex DMA up to 1.1Gb/s for simultaneous capture & playback

All Epoch models support:

- 7.1 & 5.1 surround sound via AES/EBU or SPDIF connections and includes 16 channels of embedded audio.
- 2 channels of RCA analog output.
- Audio sample rate converters



Epoch|2K Ultra Key Features

Supported Video Modes

- 720x486i @ 59.94 Hz *NTSC*
- 720x576i @ 50.00 Hz *PAL*
- 1280x720p @ 23.976Hz, 24Hz, 50Hz, 59.94Hz, 60Hz
- 1920x1080i @ 50Hz, 59.94Hz, 60Hz
- 1920x1080PsF @ 23.976Hz, 24Hz
- 1920x1080p @ 23.976Hz, 24Hz, 25Hz, 29.97Hz, 30Hz, 60Hz
- 2048X1080p @ 23.976Hz, 24Hz
- 2048X1080i @ 47.96Hz, 48Hz
- 2048x1556PsF @ 14.98Hz, 15Hz

Digital Video Input and Output Signal Formats

- 3G-SDI capable
- 12 bit I/O and Video Processing
- 1 x 2K/HD/SD 4:2:2 SDI
- 2x 2K/HD/SD 4:2:2 SDI
- 2K/HD/SD 4:4:4, 4:4:4:4 (RGBA/YUVA)
- HD/SD 4:2:2:4 Video and Key (YUVA)
- 2 x Independent SDI streams

Analog Video and DVI/HDMI I/O (Future Hardware Upgrade Option)

- SD Composite
- SD Component
- HD Component
- DVI/HDMI I/O

Ancillary Data

HANC:

- RP188 timecode In
- RP188 timecode Out
- Embedded Audio
- Custom Packets

VANC:

- Closed Captioning
- 3 Line VITC
- Custom Packets

Audio Features

- 6 channels of AES/EBU I/O (Balanced, XLR) (*Optional*)
- 8 Channels of AES ID3 I/O (Unbalanced, BNC)
- 16 Channels of embedded audio per SDI I/O
- 2 analog OUT channels -10dBu (Unbalanced, RCA) OUT



Input Hardware Features

- 4 General Purpose Input Pins
- LTC Input port
- Audio sample rate converters
- Genlock Bi, Tri and Cross Lock = Bi for HD, Tri for SD

Output Hardware Features

- Programmable 4 x 4 Hardware Colour Space Conversion
- Real time hardware overlay for internal keying
- 4 x 1D LUTs on all SDI Outputs
- Built-in safe area, safe title and letterbox generator
- 4 General Purpose Output Pins
- LTC Output port

Other Features

- (MR2) Master Routing Resource
- RGB <=> YUV 12 bit Hardware Colour Space Conversion
- 3:2 Pulldown
- ISIM (Input Stream integrity management)
- 12 bit video processing throughout signal path for highest quality video
- Bypass Relay
- RS 422 Serial Ports
- 4-lane PCI-Express (8 and 16 lane compatible)
- 2K Full Duplex DMA up to 1.1GB/s data transfer
- External Break out Box (Optional)

Pixel and File Format

- DPX
- Cineon
- TGA (RGB)
- TGA (RGBA)
- QuickTime v210
- QuickTime 2VUY
- Microsoft Uncompressed AVI



Jetstream Module

- Resolution agnostic scaling of any horizontal and vertical resolution to any other horizontal and vertical resolution
- 12 bit scale processing
- Sinc(x) video interpolation algorithm using 25 X 25 TAPS
- 1/128th sub pixel scaling accuracy
- Up/Down/Cross and related frame rate conversion including 3:2 Pulldown
- Frame store enabling repeating or dropping of fields or frames for frame rate conversion
- AFD/Closed caption and timecode transcoding through format converters
- Hardware De interlacing
- Master routing resource controlled by software to scale any input, output or framestore image and pass the result to output or host
- Field upgradable firmware design via software upgrade
- Ability for 3rd party developers to custom develop each scaler module within Jetstream hardware via firmware and software upgrade

VariVue Module

- Any of the supported video modes described above can be hardware up, down or cross converted and previewed via:
 - DVI Output up to 1920 x 1200p 60 Hz 4:4:4
 - OR
 - HDMI Output up to 1920 x 1200p 60 Hz 4:2:2/4:4:4 & 8 Channels of 24bit embedded audio
- Master routing resource (MR2) allows monitoring of any input or output.
- 3 x 1D LUT for color calibrating preview from LCD/Plasma/Projector and log/linear conversion

Supported APIs:

- Bluefish444 C API (Windows/Linux/Mac)
- Bluefish444 C API (Windows/Linux)
- DirectShow Filters API
- V4L2 (Video 4 Linux 2) API

Compatible with popular retail applications:

- Adobe Creative Suite™
- Apple Final Cut Studio™
- AVID Media Composer™
- Bluefish444 Symmetry™
- Assimilate Scratch™
- Eyeon Digital Fusion™
- Drastic Technologies Quick Clip Pro™
- Drastic Technologies Media NXS™

Hardware Details

Minimum System Requirements

The following system requirements are for capturing, playback and export/master to tape using Symmetry.

Sequential file formats (Targa, DPX and Cineon) are far more intensive than clip based formats (AVI & QuickTime) due to the need for the disk array to read and write files at a rapid rate.

Fragmentation is a common side effect and most apparent cause of performance regardless of free space available especially for sequential file formats. This issue can be resolved using Symmetry *Pre Create Files* option from the *General Settings*.

Please ensure your storage solution is certified to support sequential file format in HD and 2K resolutions.

For further information and an updated list of tested storage solutions go to the Bluefish444 website at:

<http://www.bluefish444.com/support/compatibility/hardware/storage.asp>

CPU	Intel Dual/Quad Core Xeon Intel Duo Core 2 AMD Opteron 242+	
Operating System	Windows XP 32 bit SP2 2003 Server Windows Vista 64-bit Windows 7 64-bit	QuickTime 7.4.5+ Direct X 9.0C
RAM	2GB or more for compositing applications	
Chipset	7505/7525/5000X/5400/5520 series, Core i7, AMD	
Slot	One PCI-e; 4-Lane; Full-length (8 & 16 lane are compatible as well)	
Video Storage Controller Device	Refer to the Storage Bandwidth Guide, use controllers supporting these bandwidths and above. e.g. SAS/SCSI-U320	
Video Storage Type	Refer to the Storage Bandwidth Guide, use controllers supporting these bandwidths and above. e.g. SCSI to SCSI/SATA/SAS, FC to SATA* RAID 0	



Recommended System Hardware

The requirements below are given as a guide, performance vary for each system configuration. It is recommended to use certified and tested hardware configuration which available at:

<http://www.bluefish444.com/support/compatibility/hardware/>

Card	Create range
Slot Type	4 lane PCI-e (8 and 16 lane are compatible as well)
Chipset	7505/7525/5000X/5400/5520 series, Core i7, AMD 200+
System	HP XW9300, HP XW 8200, HP XW 8400 (Dual Core), HP 8600, HP Z200, Z400, Z600, HP Z800, HP Z820 Apple MacPro 3,1 Apple Mac Book Pro Apple Mac Mini Additional self certified system integrators from: Globalstor, 1 Beyond, Boxx, VDS, XENON
Memory	2GB minimum (Application dependant)
Direct X	Direct X 9C
QuickTime	7.4.5 or above
OS	Windows XP SP2 32-bit, server 2003, Vista 64-bit & Windows 7 64-bit
CPU	Intel Dual/Quad Core/Hexa Core Xeon Intel Duo Core 2 AMD Opteron 242+



Storage Requirements

The Create product range is primarily an uncompressed capture and playback solution supporting QuickTime, AVI and sequential file format for digitizing and playback, providing an unprecedented level of quality on the Windows, Linux and Apple Mac OS systems.

We do not recommend a storage solution that is using the motherboard onboard SATA/SAS controller (such as ATTO or LSI Logic RAID controller), unless the device is a Bluefish444 certified solution.

Storage Bandwidth and Capacity Guide

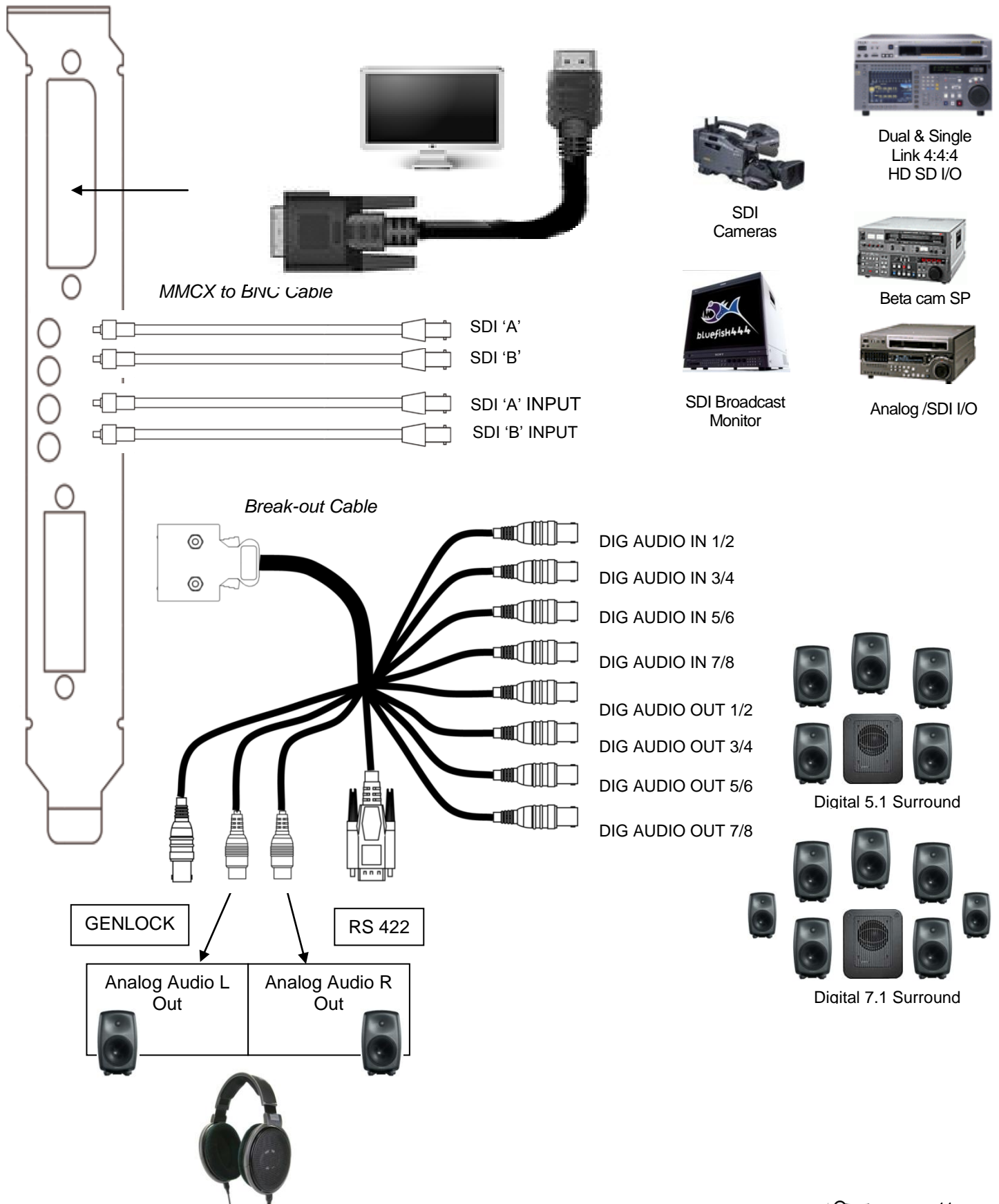
W x H x Pixel Byte Size x Frame rate/1024 ² = MB/sec	RGB(10) (40/10) MB/sec (frame size)	RGBA(8) (40/10) MB/sec (frame size)	RGB (8) (40/13) MB/sec (frame size)	V210 (40/15) MB/sec (frame size)	2VUY (8) YUVS (8) MB/sec (frame size)
1280 X 720P @ 59.94(29.97fps)	210.72 (3.51)	210.72 (3.51)	162.09 (2.7)	149.16 (2.34)	52.68
1920 X 1080 @ 50 (25fps)	197.75 (7.9)	197.75 (7.9)	155.52 (6.08)	132.58 (5.27)	101.25
1920 X 1080 @ 59.94(29.97fps)	237.30 (7.9)	237.30 (7.9)	186.44 (6.08)	138.24 (5.27)	118.54
1920 X 1080 @ 60 (30fps)	248.83 (7.9)	248.83 (7.9)	186.63 (6.08)	165.73 (5.27)	118.66
1920 X 1080 @ 25p	207.36 (7.9)	207.36 (7.9)	155.52 (6.08)	165.89 (5.27)	98.88
1920 X 1080 @ 29.97p	248.58 (7.9)	248.58 (7.9)	186.44 (6.08)	138.24 (5.27)	118.54
1920 X 1080 @ 30p	248.83 (7.9)	248.83 (7.9)	186.63 (6.08)	165.73 (5.27)	118.65
2048 X 1080P @ 24p	202.5 (8.43)	202.5 (8.43)	155.7 (6.49)	165.89 (5.27)	101.25
2048 X 1556 @ 24p	291.7 (12.15)	291.7 (12.15)	194.5 (9.35)	135.0 (5.62)	145.88
HSDL @15p	218.8 (12.15)	218.8 (12.15)	145.8 (9.35)	194.4 (8.10)	91.18

Note: Performance of systems may vary and is dependent of computer system components, storage configurations and work environments, Results and requirements found in this guide will be subject to change without notice.



Cable Connections

Optional HDMI/DVI Preview



Installation

1. Prepare your system.
2. Install 3rd party applications.
3. Install QuickTime version 7.4.5 or above
4. Bluefish444 card installation - hardware
5. Bluefish444 software installation
6. 3rd party software setup (such as Adobe)

1. Prepare your system

Ensure you have installed the latest BIOS, operating system, OS updates and drivers for your system.

Please refer to the certified hardware guide section or the readme document for more information.

<http://www.bluefish444.com/support/compatibility/hardware/>

2. Install 3rd party applications

Supported 3rd party applications must be pre-install before running Bluefish444 installer. Supported applications installed after Bluefish444 software installation, will require re-installing Bluefish444 installer again.

3. Install the latest QuickTime player

Download and install the latest QuickTime installer available at the following site.

<http://www.apple.com/quicktime/download/>

4. Bluefish444 card installation – hardware

Place your system in an easily accessible position with sufficient lighting. It is not recommend inserting the card in an awkward position that will increase the chances of a poorly contacted or incorrectly installed card.

Ensure your hands are clean and free of dirt and fluid.

Make sure you are earthed and discharge any static build up before handling the Bluefish444 by touching the metal frame of the PC case.

Do not touch the components on the PCB and do not touch the PCI slot mating edge.

- Remove your systems protective case.
- Remove the power cable from your system (!!!)
- Identify a free PCI-E slot (check your hardware configuration or contact your hardware supplier)
- Hold the card by the top of the PCI shield and at the top of the PCB at the opposite end of the PCI shield (this will reduce any chance of damage to the bluefish444 card circuitry).
- Insert the card into the correctly chosen slot by firmly pressing down on the metal PCI shield and the edge of the PCB.
- Secure the card with a screw or PCI clip (depending on the chassis).
- Replace the system chassis cover and connect the power to your system.

5. Bluefish444 Windows Installer

Key points to remember when you run the Bluefish444 installer:

- You must have Administrator privileges
 - Power Saving features should be disabled
 - Always install 3rd party software before installing Bluefish444 software
 - Always uninstall any previous installer before running the installation program
 - New Installers can detect and uninstall older versions
 - Always shut down your system, after installing the drivers
 - Always run the installer if you change Bluefish444 hardware
 - Always read the latest release notes
1. With the Bluefish444 card physically installed, turn on your system.
 2. Run the latest Bluefish444 installer available at www.bluefish444.com
 3. Follow the installer on-screen instructions
please ensure you read the license agreement before agreeing to it.
If you do not agree to the license agreement installation will not continue
 4. select/de-select 3rd party application plug-ins
 5. Select the desired Operating Mode (firmware type) and update
 6. Allow redistributables to be installed as required
 7. When installation finished, shut-down your system
 8. *Note* after a Firmware update with Windows 8 shutdown the system then Restart Windows once more to complete Driver configuration

Uninstall Bluefish444 Software

1. Make sure you have closed all applications.
2. In the Windows Control Panel, go to “Add or Remove Programs” (XP) or “Uninstall or change program” (Win7)
3. Select Bluefish444 installer, choose uninstall

6. 3rd Party Applications

Bluefish444 provide individual documentation for common 3rd party applications including:

- Adobe CC
- AVID Media Composer/Pro Tools
- Assimilate SCRATCH
- Symmetry
- Direct Show supported applications (Telestream Wirecast/vMix/etc...)
*Note that Directshow filters are Un-registered by the Bluefish444 Installer. See **Bluefish444_DirectShow_quickstart.pdf** to Register Directshow filters.

Documents can be found in the Bluefish444 Installation directory.

Bluefish444 MAC OSX installer

Key points to remember when you run the Bluefish444 installer:

- You must have Administrator privileges
 - Power Saving features should be disabled
 - Always install 3rd party software before installing Bluefish444 software
 - Always uninstall any previous installer before running the installation program
 - Use the Uninstaller provided
 - Always follow the Prompts to Restart or Shutdown
 - Always run the Firmware Updater after a new install
 - Applications > Bluefish444 > Firmware Updater
 - Always run the installer if you change Bluefish444 hardware
 - Always read the latest release notes
1. With the Bluefish444 card physically installed, turn on your system.
 2. You may be presented with “New Hardware Found” dialog box. Cancel/Close this dialog
 3. Run the latest Bluefish444 installer available at www.bluefish444.com
 4. Follow the installer on-screen instructions
please ensure you read the license agreement before agreeing to it.
If you do not agree to the license agreement installation will not continue
 5. select/de-select 3rd party application plug-ins
 6. Select the desired Operating Mode (firmware type) and update
 7. Allow redistributables to be installed as required
 8. When installation finished, shut-down your system
 9. *Note* after a Firmware update with Windows 8 shutdown the system then Restart Windows once more to complete Driver configuration

Uninstall Bluefish444

1. Make sure you have closed all applications.
2. Applications > Bluefish444 > Uninstall Bluefish444

3rd Party Applications

Bluefish444 provide individual documentation for common 3rd party applications including:

- Adobe CC
- AVID Media Composer/Pro Tools
- Assimilate SCRATCH

Feature Application (Windows)

Bluefish444 Feature Application

Bluefish444 Feature Application (or “Feature App”) is Bluefish444 control interface that runs independently to any applications using the card.

It provides hardware monitoring and diagnostic tool such as: temperature, video I/O options and audio features that may not be controlled by other supported 3rd party applications.

The Feature App will have different feature and tabs made available depending on the installed Bluefish444 hardware,

Main Tab

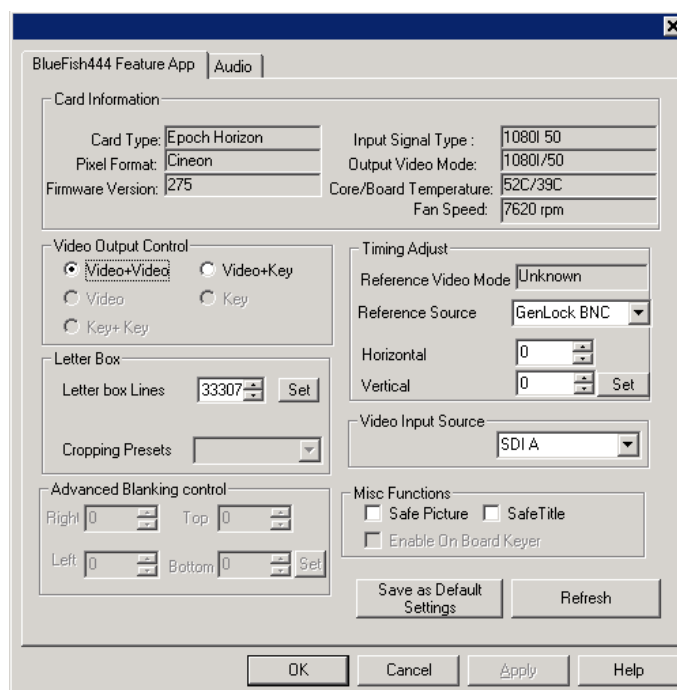
Card Information Section

Provides general information about the card installed such as:

- card name
- pixel format
- firmware version
- Input & Output Video Mode
- temperature
- fan speed

Pixel Format referred to the frame buffer mode or memory format the hardware is currently outputting, which is depending on the application in use. You can update the information by clicking refresh.

Some of the pixel formats supported are:



Pixel Format	Color Space	Link	Bit Depth
ARGB	BGR+A	4:4:4:4	8 bit
ARGB_PC	RGB+A	4:4:4:4	8 bit
CINEON/DPX	RGB	4:4:4	10 bit
V210	YUV	4:2:2	10 bit
2VUY	YUV	4:2:2	8 bit
YUVA	YUV	4:2:2	8 bit

Input Signal Type indicates the current signal the card is *receiving* on the SDI Input source from the deck or other signal source.

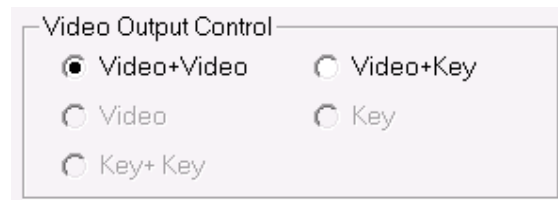
Output Video Mode indicates the current video mode the card is *outputting*.

Output Video Mode is controlled by the application (e.g. Adobe Premiere Pro, Symmetry, etc)



Video Output Control

This section gives you direct control of the output signal of your Bluefish444 card. Altering these settings will allow you to switch between outputting two video streams on both Outputs (SDI A & SDI B) or outputting video on SDI A and outputting key/alpha on SDI B



Timing Adjust

Reference Video Mode displays the input that Bluefish444 card is detecting on the reference source.

Reference Source allows you to select the reference source as either: Genlock BNC, link A, SDI link B or Software.

Horizontal adjusts the relative horizontal timing between the Genlock signal and the cards output signals.

Vertical adjusts the relative vertical timing between the Genlock signal and the cards output signals.

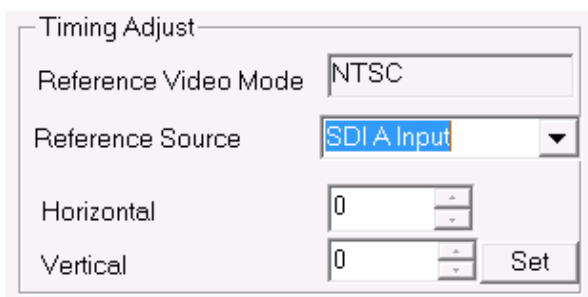
Set button commits any changes.

Letter Box - Adjust the image matte (black bars) above and below the image.

Video Input Source - For selecting the video input port (SDI A or B)

Advanced Blanking control - More accurate and fully customize letter box settings. (When available)

Misc Functions - **Safe Picture and Safe Title** are for displaying the 'safe area' of the output signal.



type

SDI

Audio Tab

Default Audio Input Source allows you to select the audio input. Available options are:

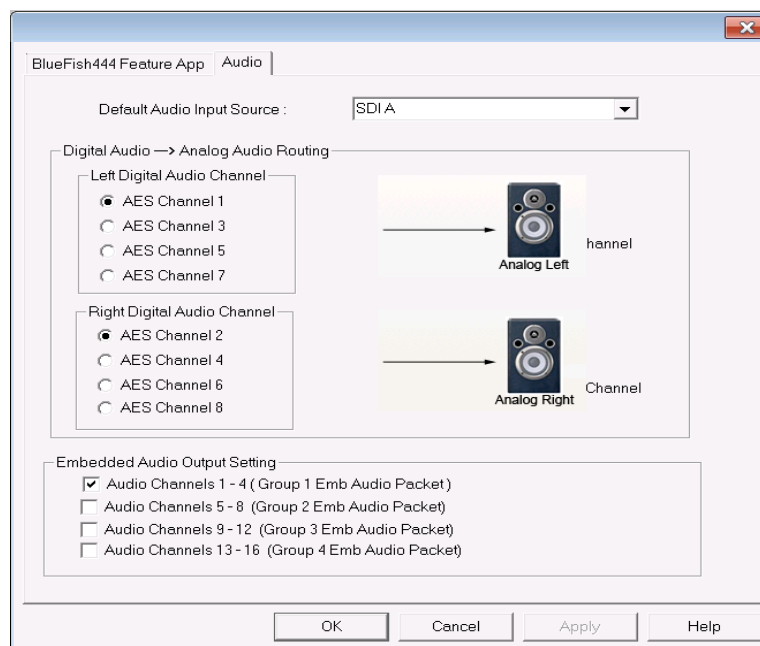
AES (digital); Analog; SDI A or SDI B.

Digital Audio → Analog Audio Routing

Provide the option to monitor specific digital AES audio channel on analog speakers.

Embedded Audio Output Setting

Embedded audio channels are grouped together to be output on SDI A/B. Select which embedded audio group to be output.



Bluefish444 Support

Bluefish444 support questionnaire

Before submitting a support call or email, please fill in the relevant questions from this questionnaire. This questionnaire will give us a better understanding of the problem/s and the different factors involved. Please be precise and clear, separate fact from speculation and do not include irrelevant detail. Answer the questions below before submitting your issue to analyze by our technical support team. Please attach to email any relevant screenshots and System Information (Run -> msinfo32.exe) for a detailed list of system information.

Date:

Name:

Company Name:

Phone number:

Email:

Website:

- Which Bluefish444 card is installed?
- What is the card serial number?
- Where and when was it purchased?
- What host system/workstation do you use?
- What Operating System(s) do you use?
- Which version of Bluefish444 Installer was used?
- What Bluefish driver version do you use?
- Which slot does the card install to?

Hardware used

- How many Bluefish444 cards are installed?
- What type of processor(s)?
- What type of RAM, how much?
- Brand/model of graphics card?
- Brand/Model of motherboard?
- Which RAID card is used? What configuration?
- What are the test results of SCSI BenchMark.exe? (C:/Program Files/Bluefish444/Symmetry/)
- Which deck is being used?

Software

- What version of Symmetry is in use?
- Which 3rd party software are installed and what version?

Video Information

- What video mode(s) do you use (capture & playback)?
- What File Format do you use?
- Which SDI input and Out connectors are used for video In & Output?
- Do you capture audio? Embedded or AES? How many channels?

General Questions

- Summary (how would you describe the problem):
- Description (details of your problem report, what application triggers the problem?):
- Steps to reproduce (possible steps or sequence of operation that can be used to recreate the problem in house, explain it so others can reproduce the problem and include any special setup steps):
- Actual Results (what the application did after performing the above steps):
- Expected Results (what the application should have done):
- Any other useful information:

Support Resources

Hardware compatibility Guide:

This site has detailed information on tested and certified hardware categorized by motherboards, systems and integrators.

<http://www.bluefish444.com/support/compatibility/hardware/>

Software compatibility guide:

Current list of released retail software that is compatible with the Bluefish444 product range.

Refer to this site often as new supported products are frequently released:

<http://www.bluefish444.com/support/compatibility/software/>

For phone support you must register your product online at:

<http://www.bluefish444.com/products/warranty/register.asp>

Support Contacts

Australia - BlueFish444 (Head Office)

17b Market Street,
South Melbourne
Victoria, 3205
Australia
Telephone: +61 (3) 9682 9477
Facsimile: +61 (3) 9682 9466
Email: support@bluefish444.com
Web: www.bluefish444.com

Europe - Bluefish444 Europe Ltd.

Joel Street Farm, Joel Street,
Pinner, Middlesex,
HA5 2PD.
United Kingdom
Telephone: +44 (0)20 8429 8345
Facsimile: +44 (0)20 8866 8207
Email: jfall@bluefish444Europe
Web: www.bluefish444europe.com

South Korea - DVNest

505 Ace Highend Tower 8th,
345-4 Gasan Dong,
Geumcheon Ku, Seoul
South Korea
Telephone: +82 1544 5596
Email: manager@dvnest.com
Web: www.dvnest.com

China - UBS Consulting

601, Block 4, Wanda Square.
93 Jianguo Road
100022 Beijing P.R, China
Telephone: +86 (10) 5820 6929,
+86 1350 1287 726
Facsimile: +86 (10) 5820 6930
Email: services@ubschina.com
Web: www.ubschina.com/bluefish

Japan - Crescent Video

3-2-12 Midori,
Sumida
Tokyo 130-0021
Japan
Telephone: +81-3-5638-1818
Facsimile: +81-3-5638-1819
Email: kotani@crescentvideo.co.jp
Web: www.crescentinc.co.jp

North America – Bluefish444 USA

Telephone: 1-617-418 1792
Email: support-usa@bluefish444.com